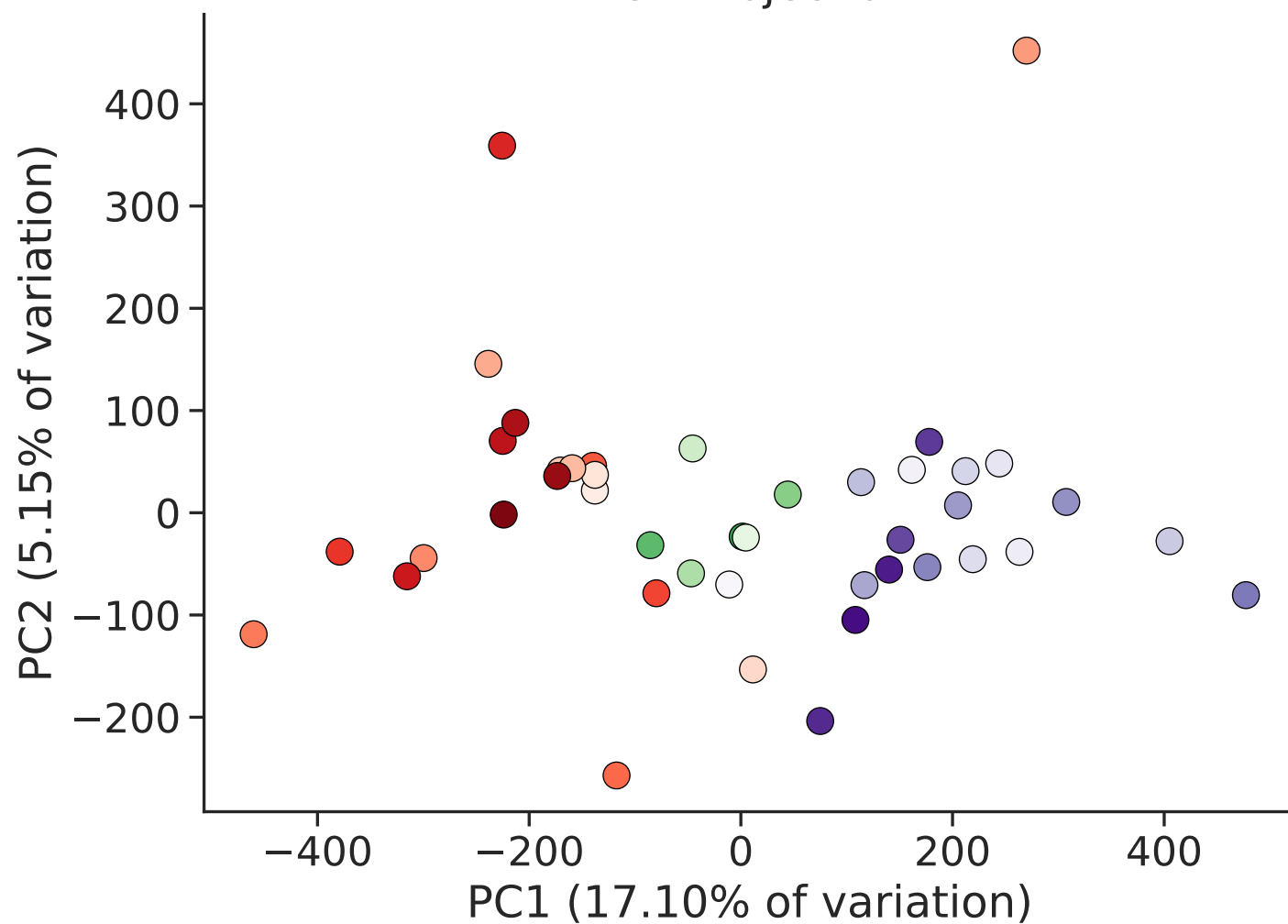


PCA Projection



- Subclass
- Chandelier
 - Pax6
 - Sncg
 - L4 IT
 - L5 IT
 - Pvalb
 - L2/3 IT
 - L6 IT
 - L6 IT Car3
 - L6b
 - L5/6 NP
 - Sst Chodl
 - Vip
 - L6 CT
 - L5 ET
 - Sst
 - Lamp5_Lhx6
 - Lamp5
 - Micro-PVM
 - Oligo
 - VLMC
 - Astro
 - Endo
 - OPC
 - Pericytes
 - Adipocytes
 - Cardiomyocytes
 - Endocardial
 - Endothelial_Arterial
 - Endothelial_Capillaries
 - Endothelial_Other
 - Endothelial_Venous
 - Epicardium_FB-like
 - Epicardium_Meso
 - Epicardium_Proliferating
 - Fibroblasts
 - Immature_Cardiomyocytes
 - Immature_other
 - Lymphoid_Immune_Cells
 - Myeloid_Immune_Cells
 - Neuronal_Cells
 - Pericytes_Stromal
 - Smooth_Muscle_Cells